

<b>Job:</b> _____	<b>Engineer:</b> _____
<b>Location:</b> _____	<b>Architect:</b> _____
<b>Schedule No.:</b> _____	<b>Date:</b> _____
<b>System Designation:</b> _____	<b>For:</b> <input type="checkbox"/> Reference <input type="checkbox"/> Approval <input type="checkbox"/> Review <input type="checkbox"/> Construction

## FEATURES

- All DC Inverter Technology
- 7 Speed
- High-lift Drain Pump
- Wide Application Range
- Single Fan Motor
- Two Blowers
- Flexible Control and Easy Maintenance
- Heating and Cooling
- Convenient Installation

PERFORMANCE		
Nominal Cooling Capacity	Btu/h	85,304
	Kw	25
Nominal Heating Capacity	Btu/h	54,594
	Kw	16

ELECTRICAL DATA		
Power Supply	V/Ph/Hz	220-240/1/50-60
Power Input (10 Pa) Cooling	Kw	850
Power Input (10 Pa) Heating	Kw	850
Min. Voltage	Volts	198
Max. Voltage	Volts	264
MCA	Amp	5.20
MFA	Amp	15
Rated Motor Output	Kw	0.96
FLA	Amp	4.10

GENERAL DATA		
Airflow rate 3	m3/h (CFM)	3000 (1776)
	m3/h (CFM)	2833 (1667)
	m3/h (CFM)	2667 (1570)
	m3/h (CFM)	2500 (1471)
	m3/h (CFM)	2333 (1373)
	m3/h (CFM)	2167 (1275)
	m3/h (CFM)	2000 (1177)
External static pressure 4	Pa	200 (100~400)
Sound pressure level 5	dB(A)	50
	dB(A)	49
	dB(A)	48
	dB(A)	47
	dB(A)	46
	dB(A)	44
Dimmension	Net (mm)	1454x515x931
	Packed (mm)	1509x550x990
Weight Net/Gross	KG	130/142
	(Lbs)	286.6/313.1
Refrigerant type		R410A
Design pressure (H/L)	Mpa	4.4/2.6
Refrigerant Pipe Connections (inch)	Gas	7/8"
	Liquid	1/2"
Drain Pipe (OD)	mm	32
Ambient Temperature Cooling	°C	20°C to 43°C
	°F	68°F to 109.4°F
Ambient Temperature Heating	°C	-5°C to 16°C
	°F	23°F to 60.8°F
Ambient Temperature Fan only	°C	16°C to 20°C
	°F	60.8°F to 68°F



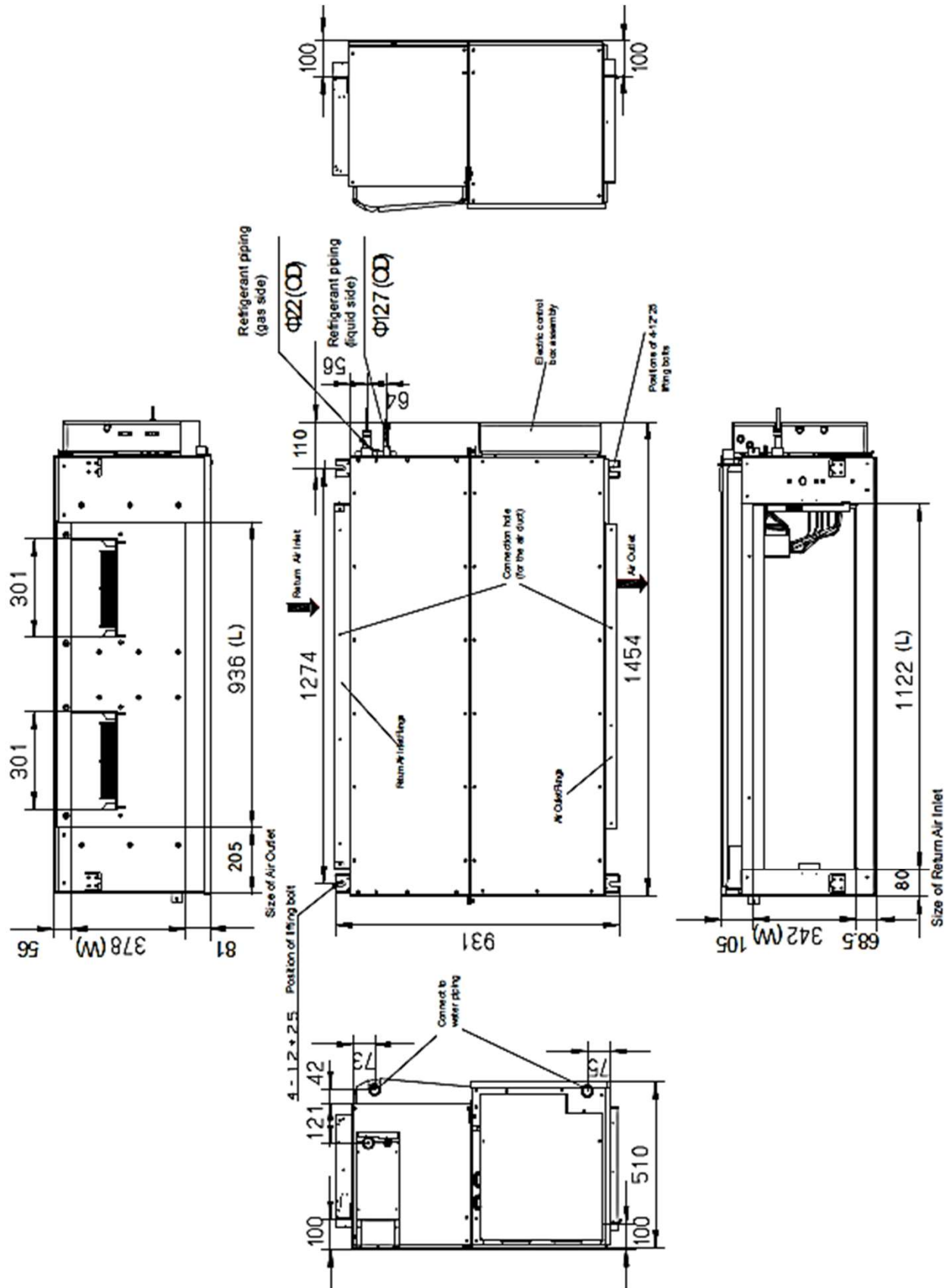
### Notes:

1. Outdoor air temperature 33°C DB, 28°C WB; equivalent refrigerant piping length 8m with zero level difference.
2. Outdoor air temperature 0°C DB, -2.9°C WB; equivalent refrigerant piping length 8m with zero level difference.
3. Stable operation external static pressure range. (Note: setting external static pressure outside the unit's optimal static pressure range may lead to higher noise levels and lower airflow rate. For the optimal external static pressure range refer to the unit's installation manual.)
4. Sound pressure level is measured 1.4m below the unit in a semi-anechoic chamber.

## OPTIONAL ACCESSORIES

Wired Thermostat CTVS-C-WR86E/KD (not included)

**DIMENSIONAL DRAWINGS - INCHES (MM)**



Note – Due to Comfort Time ongoing commitment to quality, specifications, ratings and dimensions are subject to change without notice and without incurring liability. Improper installation, adjustment, alteration, service, Maintenance and operation may cause properly damage on personal injury. Installation, service and operation must be performed by a qualified installer, servicing and operation agency.