

Job:	Engineer:
Location:	Architect:
Schedule No.:	Date:
System Designation:	For: <input type="checkbox"/> Reference <input type="checkbox"/> Approval <input type="checkbox"/> Review <input type="checkbox"/> Construction

FEATURES

- | | | |
|---|--|--|
| <ul style="list-style-type: none"> All DC Inverter Technology Free Cooling Mode High efficiency filter Energy savings, Heat recovery for both Heat and humidity | <ul style="list-style-type: none"> Controllers Wide Range DC Fan Motor Two Blowers Convenient Installation | <ul style="list-style-type: none"> Flexible Control and Easy Maintenance Multiple Operation Modes CO2 sensor option |
|---|--|--|

PERFORMANCE

Power supply		V-Ph-Hz	220-240/1/50-60
Cooling	Temp. efficiency	%	77.2
	Enthalpy efficiency	%	78.7
Heating	Temp. efficiency	%	77.2
	Enthalpy efficiency	%	80.3

ELECTRICAL DATA

Input power	W	1340	
Full Load Amp (FLA)	A	9.11	
Minimum Circuit Amp (MCA)	A	8.84	
Maximum Fusible Amp (MFA)	A	16	
Rated Motor Output	kW	0.570x2	
Indoor Fan Motor Speed	RPM	1,390	
Power supply	Wire s qty		3
	Code wire cross section	AWG	14
		mm ²	2.5

GENERAL DATA

Indoor external static pressure (Hi)	Pa	170	
Nominal air flow	m ³ /h	2000	
	CFM	1177	
Sound pressure level	dB(A)	53	
Net dimension (L×W×H)	mm	1650×1470×540	
Packing size (L×W×H)	mm	1760×1580×720	
Net/Gross weight	kg	165/247	
	Lbs	363.8/544.5	
Fresh air	Fresh Air Diameter	mm	346×326
		inch	13-5/8" x 12-53/64"
	Air drop	Pa	170



Note:

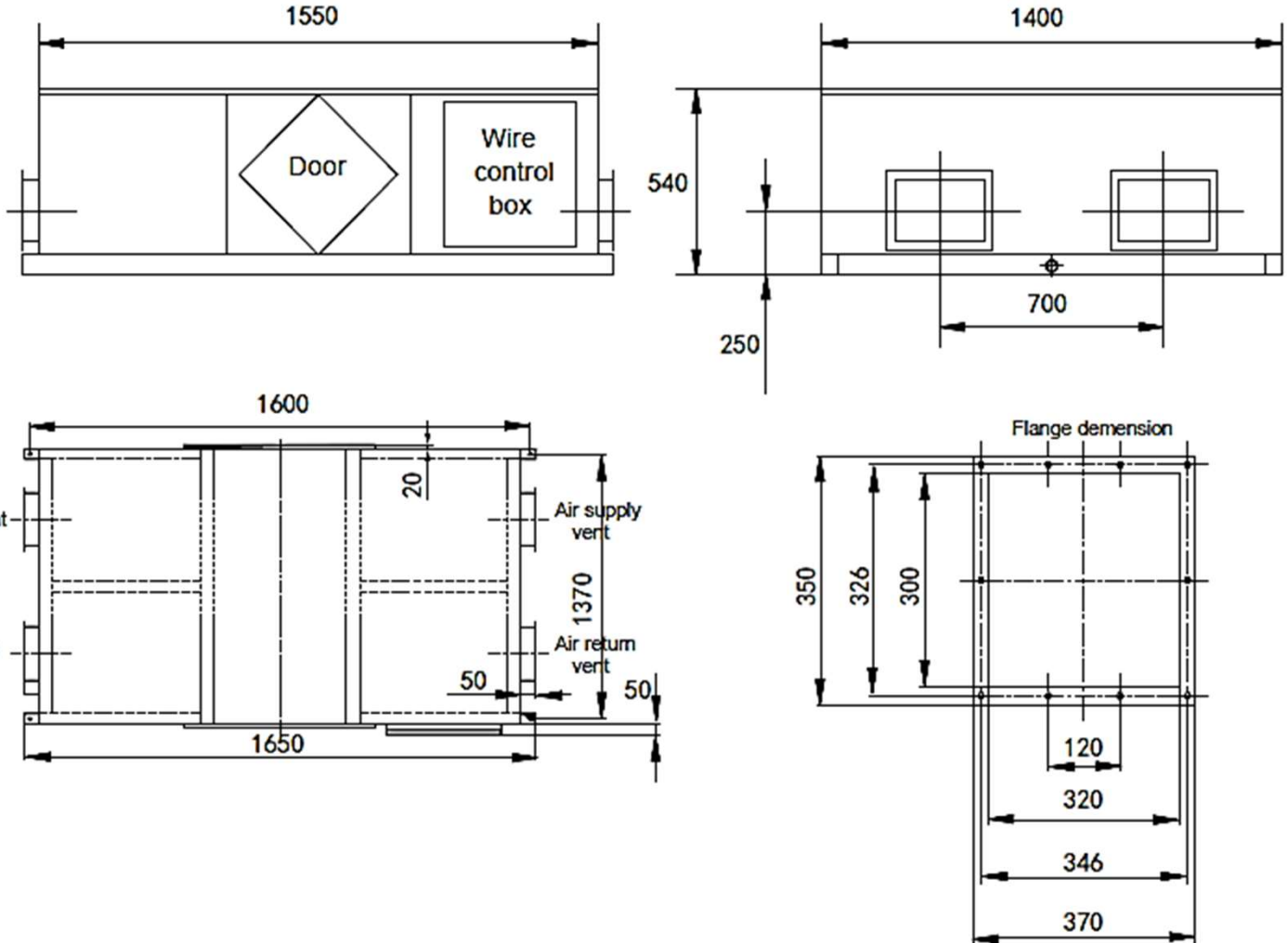
- For the units model of CTVS-IHR-X-200-A-CE-DC-1 to CTVS-IHR-X-2000-A-CE-DC-1, there are 3-speed adjustable air-volume (Hi, Med, Low).
- For the units model of CTVS-IHR-X-200-A-CE-DC-1 to CTVS-IHR-X-1000-A-CE-DC-1, all the parameters in the manual is measured at the high-speed air-volume.

OPTIONAL ACCESSORIES

- Wired Thermostat CTVS-C-WR86E/KD (not included)
- CO2 sensor (not included)

Note – Due to Comfort Time ongoing commitment to quality, specifications, ratings and dimensions are subject to change without notice and without incurring liability. Improper installation, adjustment, alteration, service, Maintenance and operation may cause properly damage on personal injury. Installation, service and operation must be performed by a qualified installer, servicing and operation agency.

DIMENSIONAL DRAWINGS - INCHES (MM)



Note – Due to Comfort Time ongoing commitment to quality, specifications, ratings and dimensions are subject to change without notice and without incurring liability. Improper installation, adjustment, alteration, service, Maintenance and operation may cause properly damage on personal injury. Installation, service and operation must be performed by a qualified installer, servicing and operation agency.