



# SUBMITTAL DATA – ROOFTOP PACKAGE UNIT

## CTPU-C-090-C-MM-1

### SCROLL COMPRESSOR

<b>Job:</b>	<b>Engineer:</b>
<b>Location:</b>	<b>Architect:</b>
<b>Schedule No.:</b>	<b>Date:</b>
<b>System Designation:</b>	<b>For: <input type="checkbox"/>Reference <input type="checkbox"/>Approval <input type="checkbox"/>Review <input type="checkbox"/>Construction</b>

## FEATURES

- Horizontal supply and return air.
- Reliable scroll compressor.
- Easy to installation
- Durable construction with pre-painted exterior cabinet with 1000 hours salt spray test
- Adjustable pulley (indoor Fan)
- Cooling Only
- Compatible with 3<sup>rd</sup> party 24V thermostat
- System self-diagnostic
- Wired Controller CTVS-C-KJR25B included

Model		CTPU-C-090-C-MM-1	
<b>Cooling Performance Data</b>	Total Cooling Capacity	Btu/h	89,000
	Sensible Cooling Capacity	Btu/h	66,000
	Cooling Power Input	kW	7.80
	EER		11.41
	Cooling Outdoor DB	°F	95
	Cooling Indoor DB/WB	°F/°F	80 / 67
	Supply Air Temp. DB/WB	°F/°F	55.6 / 67
<b>Supply Fan Performance Data</b>	Supply Air Flow	CFM	2,950
	Supply Motor RPM		1080/1010/930
	ESP	in.wg	0.20
	Supply Motor Power	HP	1.46
	Fan Type/Qty.		Centrifugal / 1
	Supply Motor Qty.		1
	Drive Type		Direct Drive
<b>General Data</b>	Refrigerant Type		R410a
	Compressors Type/Brand		Scroll/Copeland
	No. of Compressors		1
	No. of Stages		1
	Throttle Device		Capillary
	Net Dimension WxHxD	inch	58.1" x 33.1" x 44.5"
	Package Dimension WxHxD	inch	58.9" x 34.3" x 45.3"
	Net Weight	Lbs	518
	Gross Weight	Lbs	529
<b>Electrical Data</b>	Sound Pressure Level	dB(A)	75.6
	Power Supply		220V,3Ph,60Hz
	MCA	Amp	41.5
	MOP	Amp	66.3
	Compressor RLA	Amp	24.8
	Compressor LRA	Amp	191
	Supply Fan FLA	Amp	5.04
	Condenser Fan FLA	Amp	5.45
Condenser Fan Motor Power	HP	2.2	



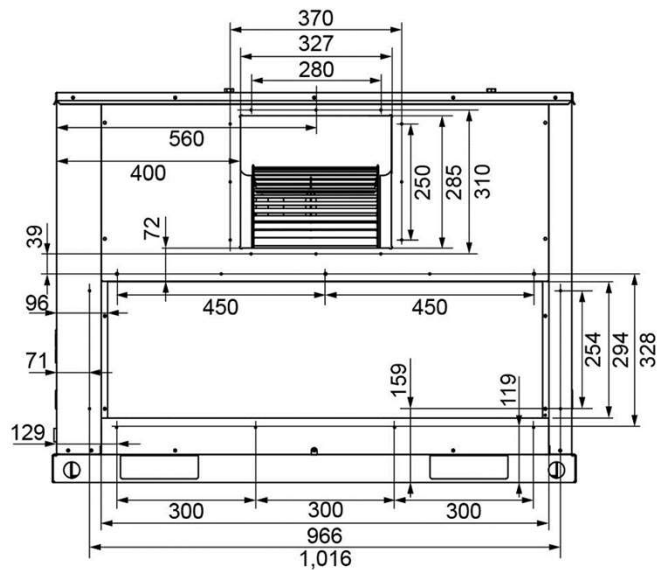
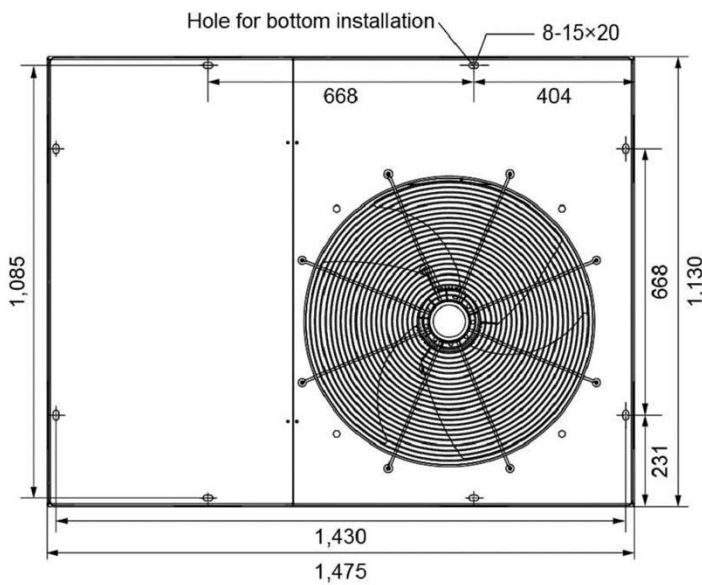
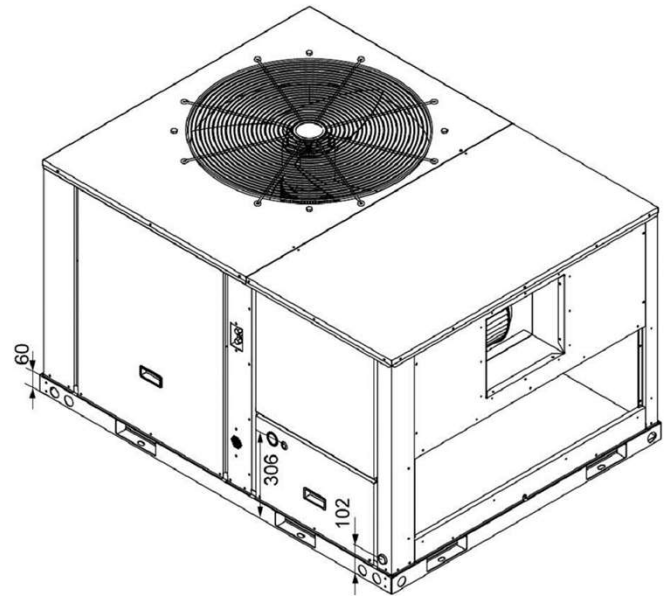
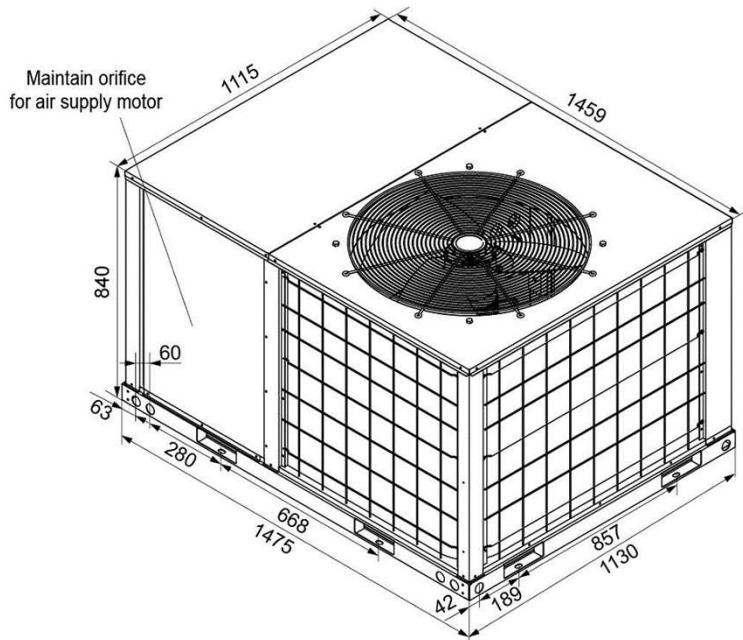
**Wired Controller CTVS-C-KJR12B (Included)**

**OPTIONAL ACCESSORIES (not included)**

- Wired Controller CTVS-C-KJR-29B
- Central Control Interface NIM01
- Central Controller CTVS-C-CCM30
- G2 Filter CTVS-C-KQGLW-260A

Note – Due to Comfort Time ongoing commitment to quality, specifications, ratings and dimensions are subject to change without notice and without incurring liability. Improper installation, adjustment, alteration, service, Maintenance and operation may cause properly damage on personal injury. Installation, service and operation must be performed by a qualified installer, servicing and operation agency.

**DIMENSIONAL DRAWINGS - (MM)**



Note – Due to Comfort Time ongoing commitment to quality, specifications, ratings and dimensions are subject to change without notice and without incurring liability. Improper installation, adjustment, alteration, service, Maintenance and operation may cause properly damage on personal injury. Installation, service and operation must be performed by a qualified installer, servicing and operation agency.