



SUBMITTAL DATA – ROOFTOP PACKAGE UNIT

CTPU-C-120-C-MM-1

SCROLL COMPRESSOR

Job: _____	Engineer: _____
Location: _____	Architect: _____
Schedule No.: _____	Date: _____
System Designation: _____	For: <input type="checkbox"/> Reference <input type="checkbox"/> Approval <input type="checkbox"/> Review <input type="checkbox"/> Construction

FEATURES

- Horizontal supply and return air.
- Durable construction with pre-painted exterior cabinet with 1000 hours salt spray test
- Reliable scroll compressor.
- Adjustable pulley (indoor Fan)
- Compatible with 3rd party 24V thermostat
- Easy to installation
- Cooling Only
- System self-diagnostic
- Wired Controller CTVS-C-KJR25B included

Model		CTPU-C-120-C-MM-1	
Cooling Performance Data	Total Cooling Capacity	Btu/h	120,000
	Sensible Cooling Capacity	Btu/h	76,304
	Cooling Power Input	kW	10.70
	EER		11.21
	Cooling Outdoor DB	°F	95
	Cooling Indoor DB/WB	°F/°F	80 / 67
	Supply Air Temp. DB/WB	°F/°F	55.6 / 67
Supply Fan Performance Data	Supply Air Flow	CFM	4,120
	Supply Motor RPM		1,700
	ESP	in.wg	0.36
	Supply Motor Power	HP	2.77
	Fan Type/Qty.		Centrifugal / 1
	Supply Motor Qty.		1
	Drive Type		Belt
General Data	Refrigerant Type		R410a
	Compressors Type/Brand		Scroll/Copeland
	No. of Compressors		1
	No. of Stages		1
	Throttle Device		Capillary
	Net Dimension WxHxD	inch	58.4" x 48.5" x 44.8"
	Package Dimension WxHxD	inch	59.1" x 49.4" x 45.5"
	Net Weight	Lbs	716
	Gross Weight	Lbs	739
Sound Pressure Level	dB(A)	75.7	
Electrical Data	Power Supply		220V,3Ph,60Hz
	MCA	Amp	51.1
	MOP	Amp	82.0
	Compressor RLA	Amp	30.9
	Compressor LRA	Amp	240
	Supply Fan FLA	Amp	7.3
	Condenser Fan FLA	Amp	5.16
	Condenser Fan Motor Power	HP	2.1



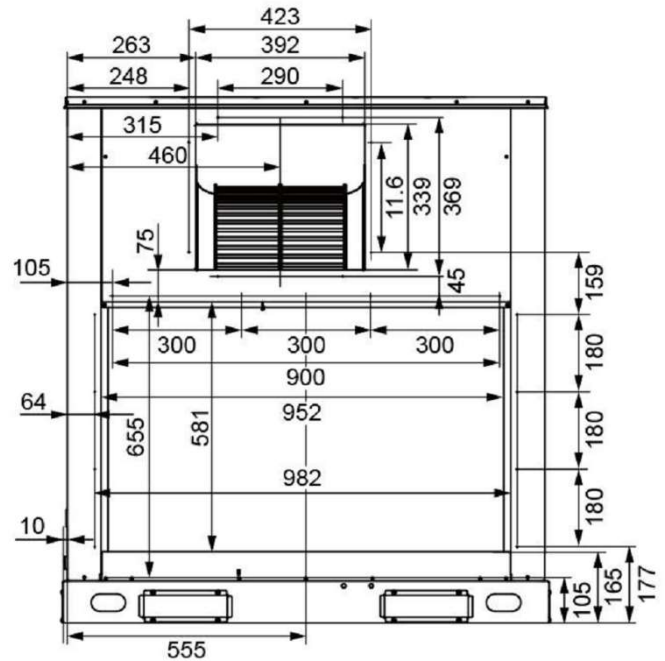
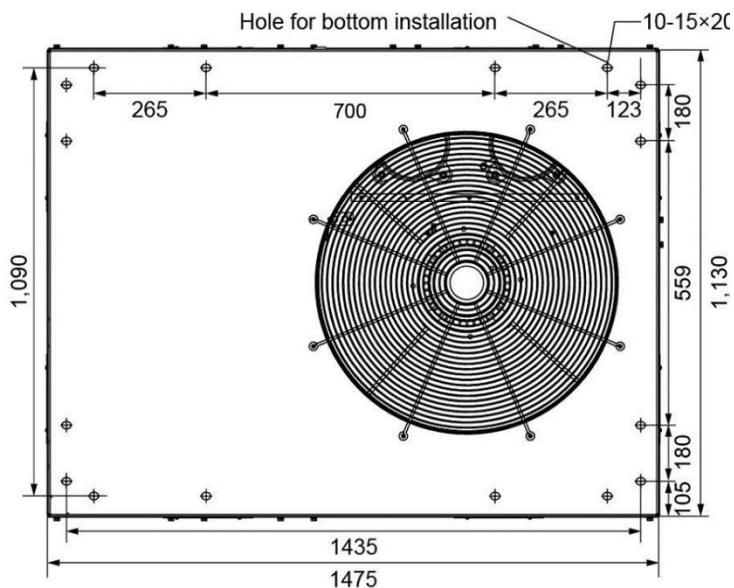
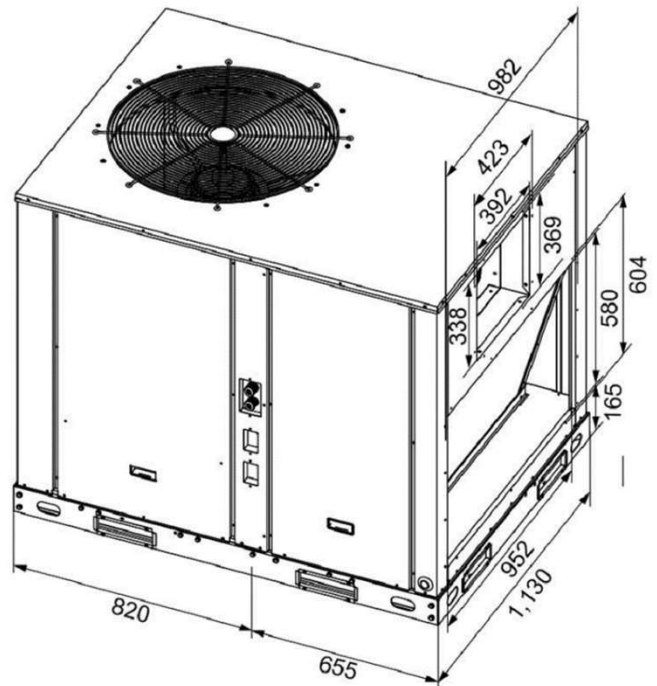
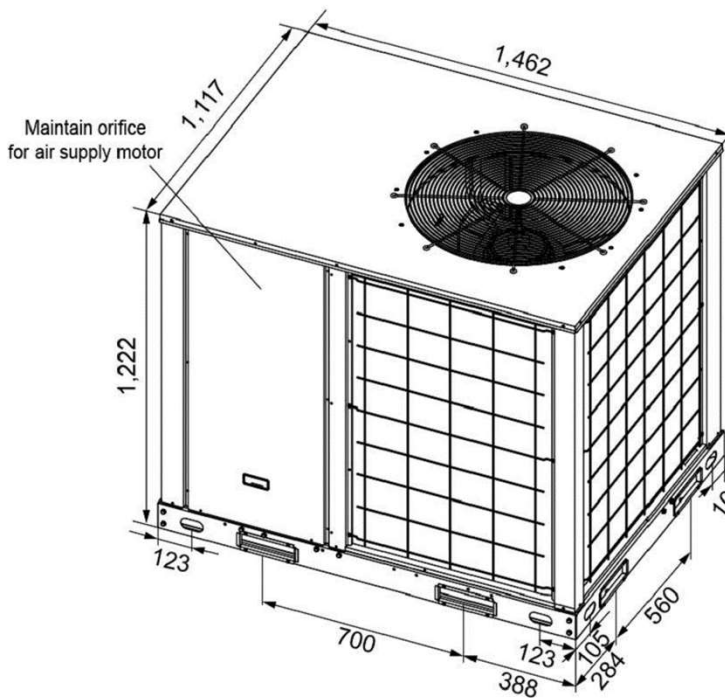
Wired Controller CTVS-C-KJR12B (Included)

OPTIONAL ACCESSORIES (not included)

- Wired Controller CTVS-C-KJR-29B
- Wired Controller CTVS-C-25B
- Central Control Interface NIM01
- Central Controller CTVS-C-CCM30
- G2 Filter CTVS-C-KQGLW-350A

Note – Due to Comfort Time ongoing commitment to quality, specifications, ratings and dimensions are subject to change without notice and without incurring liability. Improper installation, adjustment, alteration, service, Maintenance and operation may cause properly damage on personal injury. Installation, service and operation must be performed by a qualified installer, servicing and operation agency.

DIMENSIONAL DRAWINGS - (MM)



Note – Due to Comfort Time ongoing commitment to quality, specifications, ratings and dimensions are subject to change without notice and without incurring liability. Improper installation, adjustment, alteration, service, Maintenance and operation may cause properly damage on personal injury. Installation, service and operation must be performed by a qualified installer, servicing and operation agency.